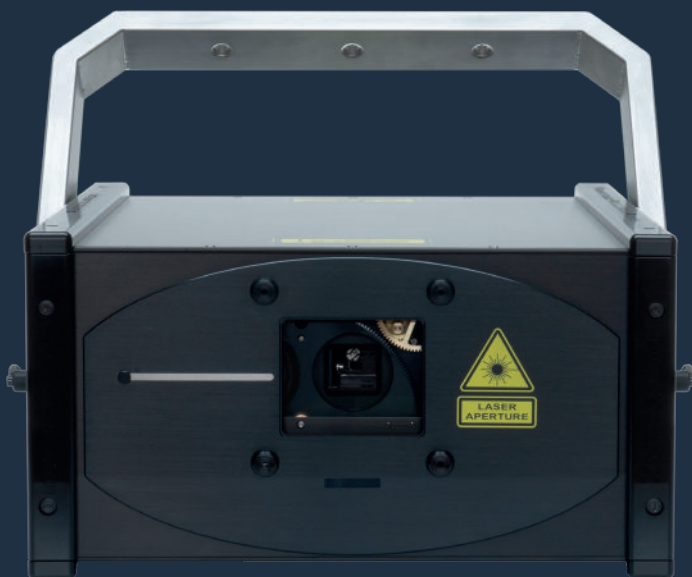


PHAENON XD

LASER PROJECTORS

EDITED: 2025-08

LaserAnimation
SOLLINGER



PHAENON XD COMPACT HOUSING



LaserAnimation
SOLLINGER

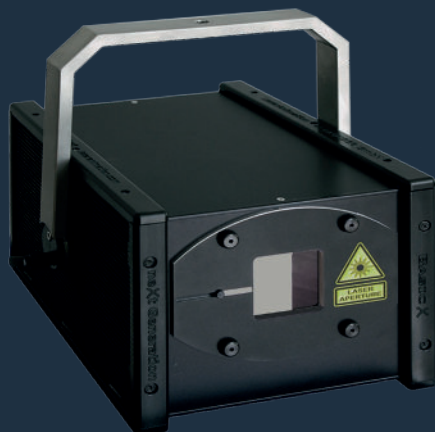
The PHAENON XD series are high-end color laser projectors for professional applications with wide range of laser output powers. Integrated is a modular laser system with laser diode modules from LaserAnimation in red and blue combined with green (520 nm / 525 nm diode / 532 nm OPSL) plus orange resp. yellow Genesis Taipan OPSL laser sources. All laser colors are combined to a focused beam of high intensity. The laser sources stand out due to their high beam quality in rich colors, low divergence as well as their enormous durability.

placement and setup guarantee a sharp precise beam with a homogeneous beam profile and low divergence, even over longer distances.

Depending on the laser model, the PHAENON XD series is usually delivered in two housing sizes. The mini housing (see small picture) measures 37.5 x 29.1 x 22.3 cm and the compact housing measures 42 x 40.6 x 22.3 cm. All models in the PHAENON XD series can also be ordered in an IP65 housing.

The PHAENON series laser projectors have been known in the industry for years for their excellent quality, exceptional reliability, guaranteed safety and high ease of use. That's why they are the first choice of numerous renowned companies from the event sector for extensive installations with lasers.

The laser projectors of the PHAENON XD series are delivered in a durable flight case.

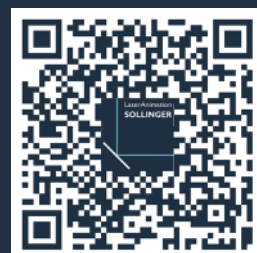


PHAENON XD MINI HOUSING



CAUTION - CLASS 4 LASER
RADIATION WHEN OPEN
AVOID EYE OR SKIN EXPOSURE TO
DIRECT OR SCATTERED RADIATION

LASER RADIATION
AVOID EYE OR SKIN
EXPOSURE TO DIRECT
OR INDIRECT RADIATION
CLASS 4 LASER PRODUCT
DIN EN 60825-1:2015-07



PHAENON XD

LASER PROJECTORS

EDITED: 2025-08

LaserAnimation
SOLLINGER

Control Modes

AVB / TSN interface for data streaming via Ethernet, AIFF player function, stand-alone player, ILDA, DMX / ArtNET, control software “LA.toolbox” for PC or Mac included

Typical wavelengths:

638 nm | 590 / 577 nm | 520 - 525 nm / 532 nm | 445 nm

Type

CW analog modulated

Beam Diameter*

4.5 mm
5 mm (XD 36 O & XD 38 Y)

Beam Divergence*

< 0.5 mrad
0.7 mrad (XD 36 O & XD 38 Y)

Scanner

CT 6210, Turboscan XD: 60 kpps 8°, max 80° (typical 50°), reaction time (2° opt. step): < 0,2 ms, aperture: 4 mm

Weight

ca. 18 - 32 kg (depending on model)

Dimensions

L 37.5 cm x W 29.1 cm x H 22.3 cm (XD 15, XD 18, XD 36 O, XD 38 Y)
L 42.0 cm x W 40.6 cm x H 22.3 cm (XD 24 & XD 30)

IP Rating

IP54

Thermal

Ambient teperature: - 5°C - +50°C

Electrical Input

Universal input: 85 VAC - 264 VAC, 50 - 60 Hz
Power consumption: 450 W - 1500 W (depending on model)

Laser Safety

- Electronic mask to define protected areas in a laser projection using controlling software
- Scanfail safety circuit
- Physical adjustable beam blocker
- Key switch, Interlock, emission LED

Climate Components

- Generously dimensioned heat sink as base for all temperature relevant components
- Peltier elements for either heating and cooling
- Temperature controlled low noise fans with high efficiency

Standardized Connectors

- AC Mains Connector: Neutrik PowerCon TRUE1
- Projector Signal, analog: ILDA In D-sub 25, differential inputs
- Remote: 7pin XLR (external key switch, interlock)
- DMX In / Thru
- LAN

Properties

- Modular laser system with LaserAnimation manufactured red and blue laser diode modules combined with green diode resp. green and additionally yellow Coherent Genesis Taipan OPSL modules (depending on model, see below)
- Integrated intelligent LaserAnimation Sollinger Mainboard
- Control via “LA.toolbox” software (electronic mask, color correction, DGC (Digital Geometric Correction), laser disable). Software included in delivery
- AVB / TSN interface for streaming data via Ethernet
- Motorized beam adjustment for an exact color overlay
- CT 6210 scanner with proven TurboscanXD driver electronics
- Dante2ILDA optionally available
- DSP Mark2 resp. DSP Mark2 playback optionally available
- Pangolin FB4 optionally available
- Grating module optionally available (6 gratings)
- LA. brush optionally available
- Flightcase included

*FWHM average depending on model

Laser Projector	Guaranteed optical power	Minimum power at aperture	Red Module (638 nm)	Orange / Yellow Taipan OPSL (590 nm / 577 nm)	Green Module Diode / Taipan OPSL (520 - 525 nm / 532 nm)	Blue Module (445 - 455 nm)
PHAENON XD 15	15 W	14 W	4.8 W		4 W (520 nm)	8 W (445 nm)
PHAENON XD 18	19.5 W	17 W	4.8 W		8 W (532 nm)	8 W (445 nm)
PHAENON XD 24	24 W	21 W	9.6 W		8 W (532 nm)	8 W (445 nm)
PHAENON XD 30 Y	30 W	26 W	9.6 W	6 W (577 nm)	8 W (532 nm)	8 W (445 nm)
PHAENON XD 36 O	38 W	33.5 W	10.8 W	3 W (590 nm)	11.6 W (525 nm)	15 W (455 nm)
PHAENON XD 38 Y	40 W	35.5 W	10.8 W	5 W (577 nm)	11.6 W (525 nm)	15 W (455 nm)

LaserAnimation Sollinger product specifications are based on the latest information. While we strive for accuracy, they are subject to change without prior notice.