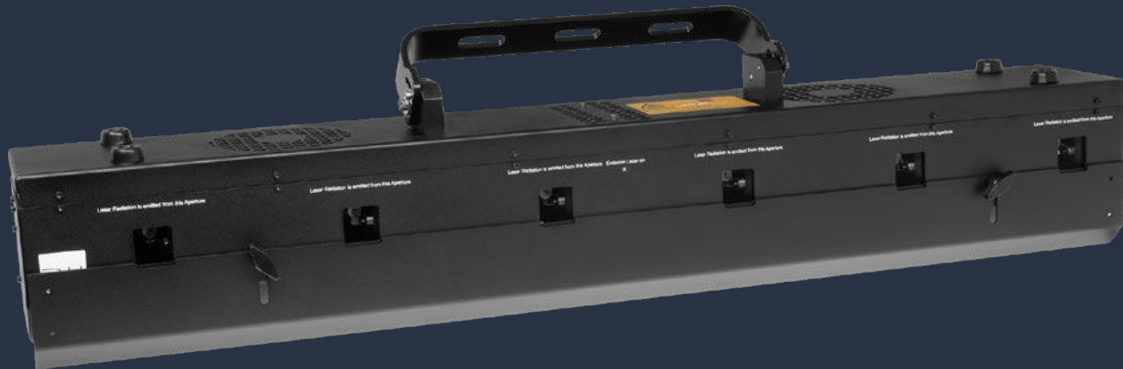


RTI NEO

LASER PROJECTORS

LaserAnimation
SOLLINGER



The RTI NEO laser projectors are whitelight RGB beam arrays with analog modulation and six beam outlets. Each beam output comes with its own XY scan set with 45 kpps@8° ILDA. Besides the single beam, the RTI NEOs offers 10 standard preset patterns like a square, a circle, a triangle and others which can be displayed by all six laser outputs, but can be selected individually. The RTI NEO lasers can be controlled via DMX. Thus it is possible to create different chaser, beam and fan laser light effects and the projectors can be implemented to existing lighting setups. Most important settings can also be adjusted via integrated display. A great visual effect for stages, live gigs, nightclubs, show productions and any event which requires a unique visual enhancement.

Control Modes

DMX

Typical wavelengths:

638 nm | 520 nm | 450 nm

Type

CW analog modulated

Beam Diameter*

3 mm (NEO 6) | 5 mm (NEO 12)

Beam Divergence*

0.5 mrad (NEO 6) | 0.9 mrad (NEO 12)

Scanner

45 kpps ILDA 8°, max. 45°

Weight

8 kg (NEO 6) | 17.5 kg (NEO 12)



Dimensions

L 100 cm x W 15.2 cm x H 11.8 cm (NEO 6)

L 100 cm x W 17.0 cm x H 15.5 cm (NEO 12)

IP Rating

IP5X

Electrical Input

Power consumption: 360 W (NEO 6) | 500 W (NEO 12)

Laser Safety

- Scanfail safety circuit
- Key switch, Interlock, Emission LED

Standardized Connectors

- AC Mains Connector: Neutrik PowerCon TRUE1
- Interlock: rj45 connector
- DMX In / Thru

Properties

- Can easily be integrated into an existing lighting setup
- Integrated display
- Professional DMX with pre-set patterns
- Rugged tour-grade compact housing
- 6 x X/Y scanners at 45 kpps @ 8° ILDA

*FWHM average depending on model



Laser Projector	Guaranteed output power	Red Module (638 nm)	Green Module (520 nm)	Blue Module (450 nm)
RTI NEO 6	1.8 W	135 mW	70 mW	95 mW
RTI NEO 12	12 W	600 mW	600 mW	800 mW