

RTI ANGO

LASER PROJECTOR

LaserAnimation
SOLLINGER



The RTI ANGO Series is a range of ultra high power laser systems that is designed for long distance laser visibility. The ANGO laser systems are full color, analog modulated laser systems with an highly focused and low divergent beam for such a power range. They are equipped with the latest high precision laser module technology of RTI.

With continuous wave output powers of 300W and 600W, the RTI ANGO laser systems are extreme in many ways – it's not only the power, but also the capability to move the beam!

The individual powers per source color are well balanced so that the color mixture is balanced and homogeneous over long distances.

The divergence of only 1.0 mrad* with a beam diameter at aperture of only 75 mm resp. 100 mm provides ideal conditions for highly visible beams over very long distances.

The RTI ANGO laser systems are equipped with a mirror to deflect and position the beam on the X and Y axis. The movement of the beam can precisely be controlled via DMX or Art-Net.



To ensure that the ANGO laser systems can withstand adverse weather conditions, they are equipped with an active chiller unit for precise temperature control and a robust, rainproof housing. With the internal chiller, the specified operating temperature range for the RTI ANGOs is from -5 to +50°C.

To ensure that the outlet window does not get dirty or get too much water when it rains, a specially designed, movable outlet chamber is attached to the device, which reduces maintenance to a minimum.

Due to the powerful built-in chiller, the RTI ANGOs require a 16A CEE 3-phase connection while consuming max. 7500W.



RTI ANGO

LASER PROJECTOR

LaserAnimation
SOLLINGER

Control Modes

DMX, ArtNET

Typical wavelengths:

637 nm | 525 nm | 455 nm

Type

CW analog modulated

Beam Diameter*

75 mm (ANGO 300)

100 mm (ANGO 600)

Beam Divergence*

1.0 mrad

Scanner

Moving XY scanner mirror, 16bit resolution

Weight

ca. 270 kg (ANGO 300) | ca. 300 kg (ANGO 600)

Dimensions

L 158.4 cm x W 80.2 cm x H 178.0 cm

IP Rating

IP65

Thermal

Ambient temperature: -5°C - +50°C

Electrical Input

Input: 16A CEE 3 Phase

Power consumption: max. 7500 W

Laser Safety

- Physical locking pin for movement restriction
- Key switch, Interlock, Emission LED

Climate Components

Built-in air conditioning

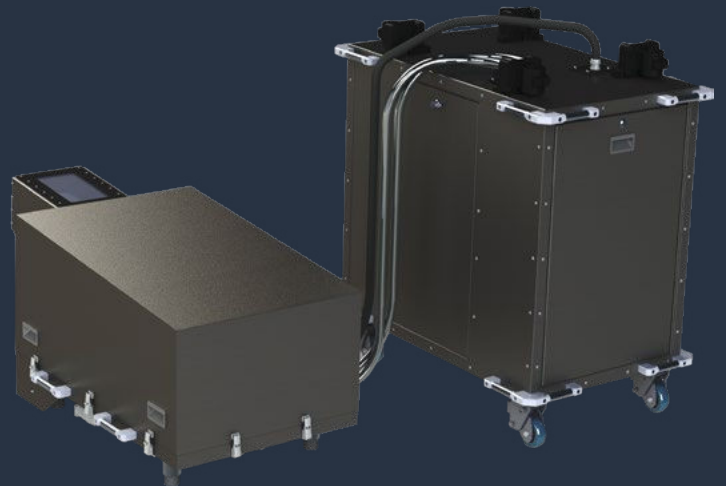
Standardized Connectors

- AC Mains Connector: 16A CEE 3 Phase
- Interlock: etherCON connector (IN & OUT)
- DMX In / Thru
- ArtNET via etherCON

Properties

- continuous wave output powers of 300W and 600W
- analogue modulated multicolor system, including white
- moving beam with XY deflection
- up to 350° projection angle for tilt
- weatherproof housing, IP65
- active built-in air conditioning
- optional: RTI ANGO DUAL Extension Kit (10 meter length)

*FWHM average depending on model



| Laser Projector | Guaranteed output power | Red Module (637 nm) | Green Module (525 nm) | Blue Module (455 nm) |
|-----------------|-------------------------|---------------------|-----------------------|----------------------|
| RTI ANGO 300 | 300 W | 100 W | 85 W | 140 W |
| RTI ANGO 600 | 600 W | 200 W | 170 W | 280 W |