



First full color laser projector with Ethernet AVB support.
Due to its ultra-low weight it is perfect for all applications without elaborate installation.

Laser Source Laser diode module “White 7000” manufactured by LaserAnimation

Type: CW analog modulated
Laser Class: 4
Beam Diameter: 4 mm
Divergence (full angle): < 1.1 mrad
Typical wavelengths: 638 nm | 520 nm | 445 nm
True White D65: 2800 mW

PHAENON Accurate	Specified Laser Output @ Source			
	Total	Red	Green	Blue
White 7000	7600 mW	1600 mW	2000 mW	4000 mW

Laser Driver

- Compact reliable “LDT triple” manufactured by LaserAnimation guarantees long life time as well as perfect projection quality

Laser Safety

- Scanfail safety circuit
- Interlock loop
- Emission Display



MADE
IN
GERMANY
used worldwide



Technical specifications subject to change without prior notice!

High-end Scanning System

- CT 6210H X,Y scanners with LaserAnimation's high-speed TurboScan drivers
Scan system speed: 40 k ILDA 8°
Aperture: 4 mm
Projection angle: 80° maximum, 50° typical
Reaction time (2° opt. step): < 0.2 ms

Control

- LA Toolbox software for installation on PC

Climate Components

- Heat sink as base for all temperature relevant components
- Peltier elements for either heating and cooling
- Temperature controlled low noise fans

Thermal

- Max. ambient temperature: 50°C
- Min. ambient temperature: - 5°C

Standardized Connectors

- LAN AVB interface for streaming ILDA data via Ethernet and for controlling the projector via included LA Toolbox software
- Projector Signal, analog: ILDA Mini Con, differential inputs
- Interlock: Mini Con (interlock, external key switch)

Electrical Input

- 85 VAC - 264 VAC, 50 Hz - 60 Hz, universal
- Input power: 300 W maximum

Compliance

CE, CDRH

Warranty

12 months after delivery

Physical

- Carbon housing
- Weight: 5,4 kg
- Dimensions: 331 mm x 154 mm x 105 mm (L x W x H without yoke)

Package (optional)

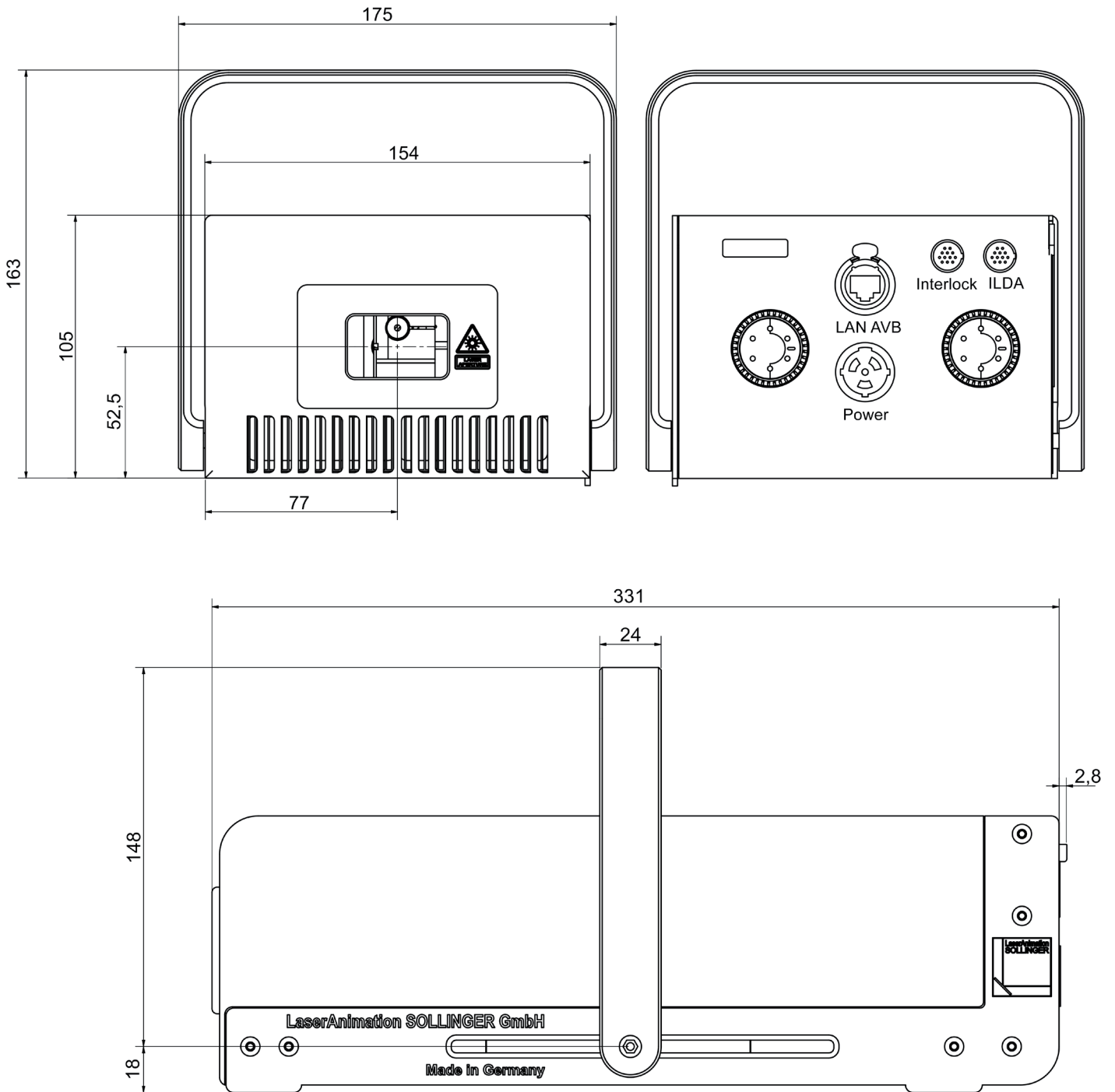
- systainer T-Loc III
- bwh box 4000



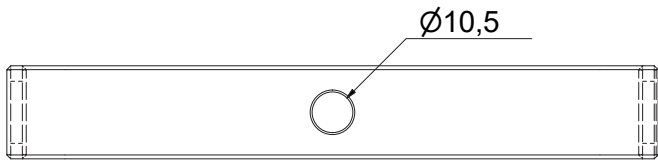
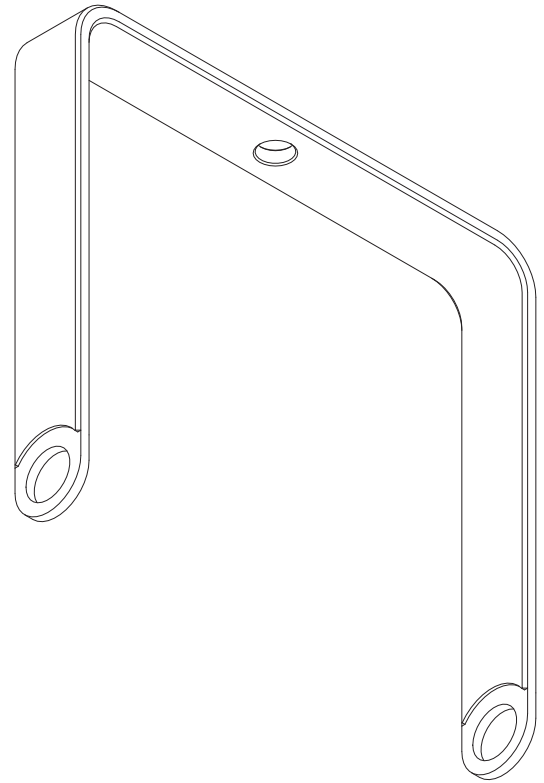
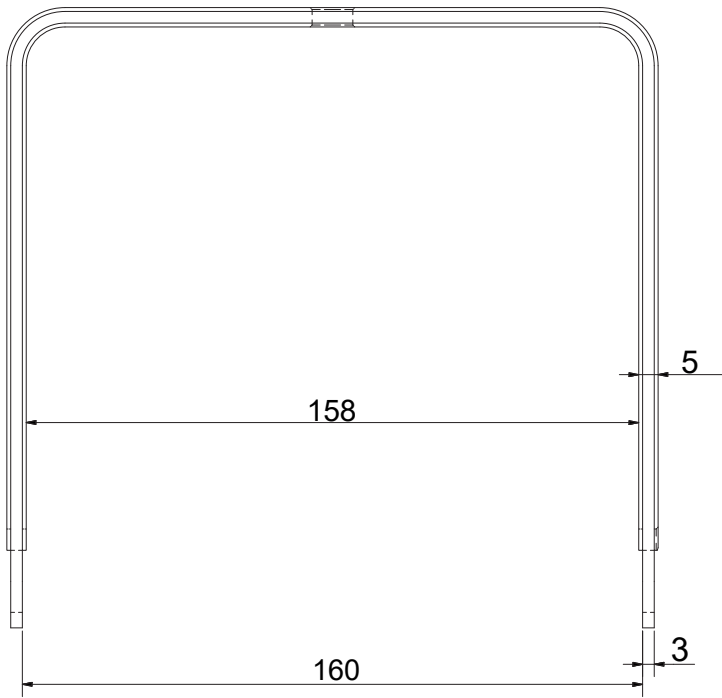
**MADE
IN
GERMANY**
used worldwide



Technical specifications subject to change without prior notice!



Technical specifications subject to change without prior notice!



■ **MADE**
■ **IN**
■ **GERMANY**
used worldwide



Technical specifications subject to change without prior notice!